

NEWSLETTER



Wembley Downs Primary School

From the Principal

26 MARCH, 2019

All Parents,

Play Based Learning

Update

We have been able to secure the services of a renowned expert to conduct the beginnings of our efforts to establish a 'play-based' learning environment within the Kindy to Year two classes in the school. This will occur on 29 April 2019 (school development day).

"Play is central to and highly valued as a quality pedagogical practice in early childhood settings. It is considered by educators of young children as pivotal to the processes of learning and development (Gleave, & Cole-Hamilton, 2012). The importance of play-based learning is widely documented, especially in relation to early years settings prior to the commencement of formal schooling. Whitebread (2012) reports there is now a body of research evidence demonstrating the overwhelming benefit of the role of play in supporting intellectual achievement and emotional well-being."

<https://ro.ecu.edu.au/cgi/viewcontent.cgi?article=3692&context=aite>

It has been my experience in reading, listening to and participating in discussions on 'play based' learning, that there seems to be a tendency to place play based learning into opposition with explicit teaching. This is not helpful nor is it accurate.

"Those advocating a play-based learning program are often cast as adversaries of those who believe young children need explicit teaching to prepare them for literacy and numeracy success in later years of school. It is unhelpful to construe these as opposed positions. Play-based learning is not 'just play'. When implemented with care, planning and deliberate learning goals in mind, it is an effective vehicle for achieving expected outcomes for children in the early years."

<https://www.education.wa.edu.au/documents/43634987/44524721/The+Early+Years+of+Schooling.pdf/d044e300-584b-1413-aacd-238f7aaf9b57>

Indeed, we expect our teachers to use a range of instructional methods to ensure that they are well placed to assist students to, *"learn on their own as well as with and from others."* Effective teachers appreciate, *"that students learn best if they are provided with opportunities to learn, not only from the*

DATES TO REMEMBER

Friday 5 April

Year 2 Penguin Island
Excursion

P&C Bush dance
5pm to 8pm

Wednesday 10 April

Interschool Swimming
Carnival

Friday 12 April

Citizenship Awards
Assembly
Last Day of Term 1

Tuesday 30 April

FIRST DAY STUDENTS
Kings Park Excursion
Rooms 14 & 16

Wembley Downs Primary School

Telephone 9245 3199

Website: www.wembleydownsps.wa.edu.au

email: wembleydowns.ps@education.wa.edu.au



Principal News cont...

teacher, but also from other students and from sources outside the school that are now more readily accessible through various forms of technology."

Swimming Carnival

On behalf of the school community I thank all of the hard working and enthusiastic parents and staff who provided their assistance and expertise and helped us to produce another outstanding event for the students. We appreciated all who provided very positive feedback to the school.

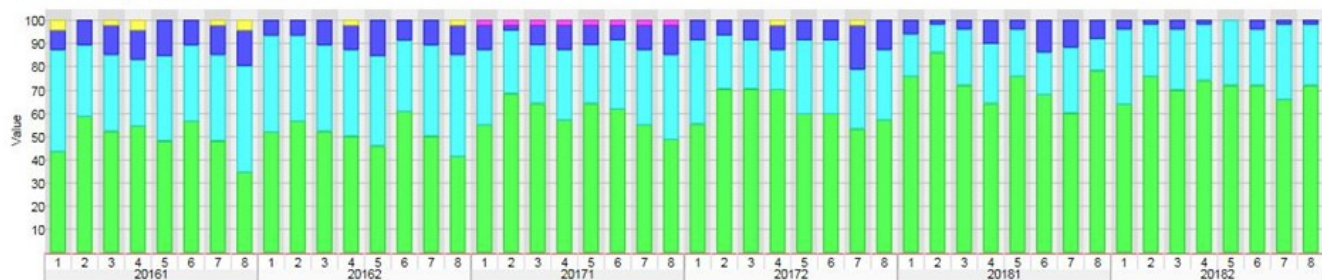
Year 4 Assembly

The first 'class assembly' of the year proved to be a very enjoyable and well produced event. The Year four teachers and all of the students are to be commended on the excellent way they presented their item and read their 'lines'. From my perspective, the students spoke very clearly, confidently while conveying some important messages. Simply, it was an outstanding effort by all concerned. J

Teacher Collaboration and School Improvement 25 – 27 March 2019

On Monday, Tuesday and Wednesday this term all staff have had the opportunity to meet and discuss how we can further develop the school's teaching and learning programs. Often, the focus of school improvement efforts is based on an examination of student performance in literacy and numeracy and using that data to 'shape' school improvement efforts. However, it can be as equally instructive and purposeful to review some of the school's non-academic data. For example, when we examine accumulated **A**ttitude, **B**ehaviour and **E**ffort data we find that many of our students are not demonstrating (on a consistent basis) some of the following ABE's.

Results including data from other schools



What is evident is that we would like to see more students achieving a consistent level against some of the Attitude, Behaviour and Effort questions. This is the section of the report where teachers make assessment against those 8 questions.

Q1. "Works to the best of his / her ability"

Consistently = **58.7%** (green)

Often = **30.4%** (light blue)

Sometimes = **10.9%** (blue)

The consistency and pattern of the data seems to signal the same information from year to year.

With the support of families I think we can improve this data and ensure that the students acquire and demonstrate these important learning behaviours on a more 'consistent' basis. As a result of our work over the previous few days we are working on implementing some strategies that will support a change in this data.

Regards

Mr Lincoln Day—Principal

Deputy News

Zones of Regulation

This year the school has introduced the Zones of Regulation. This is a framework designed to support all the students in understanding and managing their feelings, and to better understand how others are feeling. This aligns with the health curriculum across all year levels. Below is some information about the Zones taken from the web site:

Self-regulation is something everyone continually works on whether or not we are cognizant of it. We all encounter trying circumstances that test our limits from time to time. If we are able to recognize when we are becoming less regulated, we are able to do something about it to manage our feelings and get ourselves to a healthy place. This comes naturally for some, but for others it is a skill that needs to be taught and practiced. This is the goal of The Zones of Regulation (or Zones for short).



THE FOUR ZONES: OUR FEELINGS & STATES DETERMINE OUR ZONE

The **Red Zone** is used to describe extremely heightened states of alertness and intense emotions. A person may be elated or experiencing anger, rage, explosive behavior, devastation, or terror when in the Red Zone.

The **Yellow Zone** is also used to describe a heightened state of alertness and elevated emotions, however one has more control when they are in the Yellow Zone. A person may be experiencing stress, frustration, anxiety, excitement, silliness, the wiggles, or nervousness when in the Yellow Zone.

The **Green Zone** is used to describe a calm state of alertness. A person may be described as happy, focused, content, or ready to learn when in the Green Zone. This is the zone where optimal learning occurs.

The **Blue Zone** is used to describe low states of alertness and down feelings such as when one feels sad, tired, sick, or bored.

The Zones can be compared to traffic signs. When given a green light or in the Green Zone, one is “good to go”. A yellow sign means be aware or take caution, which applies to the Yellow Zone. A red light or stop sign means stop, and when one is in the Red Zone this often is the case. The Blue Zone can be compared to the rest area signs where one goes to rest or re-energize. All of the zones are natural to experience, but the framework focuses on teaching students how to recognize and manage their Zone based on the environment and its demands and the people around them.

Michelle Leeming—Deputy Principal

School Photos

Last Chance to Order!!!! Free Delivery ENDS Tonight!!!

School photo free delivery definitely ends tonight.

Please place your order before midnight to avoid extra costs.

Contact Grant with any questions.

grant@granttaylorportraits.com.au

Phone: 0487304616

Order Now!

Congratulations



Congratulations to Luella H—Year 2—Room 8.

She is the Little Athletics Under 7 Runner up Champion for 2018/2019.

Well done!



School Sores

Recently there has been a couple of cases of school sores in the school.

This is a common, acute bacterial infection of the skin caused by staphylococcal or streptococcal bacteria.

Children must be excluded from school for 24 hours after seeing a Doctor and commencing antibiotic treatment.

This information is from the Communicable disease guidelines provided by the Department of Health.

Impetigo (School sores)	
A common, acute bacterial infection of the skin caused by staphylococcal or streptococcal bacteria. Symptoms include itchy pustules and scabs.	
Transmission	Direct contact with skin lesions
Incubation period	Usually 4 to 10 days
Infectious period	As long as there is discharge from untreated lesions
Exclusion	Exclude for 24 hours after antibiotic treatment commenced. Lesions on exposed skin surfaces should be covered with a waterproof dressing. Young children unable to comply with good hygiene practices should be excluded until the sores are dry.
Treatment	Antibiotic treatment available – refer to doctor
Contacts	Do not exclude
Immunisation	See Appendix 1

Faction Swimming Carnival

We held our Faction Swimming Carnival on Wednesday 13 March, 2019 at Churchlands Senior High School. Congratulations to **Endeavour** for winning on the day.



Year 6 Champion Boy - Felix H

Year 6 Champion Girl - Riley P

Year 5 Champion Boy - Dempsey N

Year 5 Champion Girl - Alisha B

Year 4 Champion Boy - Marley Mc

Year 4 Champion Girl - Amy W

Year 6 Runner Up Boy - Ethan L

Year 6 Runner Up Girl - Sienna Mc

Year 5 Runner Up Boy - Charlie E

Year 5 Runner Up Girl - Elise B

Year 4 Runner Up Boy - Cooper W

Year 4 Runner Up Girl - Isabel P



Harmony Day—Thursday 21 March



P&C News

Election Day Fete

*Date still to be confirmed but we have heard it will be held before May 18th 2019.

This is likely to be our main fundraising event for the year.

Please help where you can, our community really needs you!!!

Each year group will be in charge of running a stall.

We are looking for donations of:

1. Books - there will be a box placed in each classroom for book donations. contact is Alana Sizer
2. Homemade cakes/ muffins/ slices/ loaves/ preserves/ jams/ cupcakes contact Letty Hawkesford
3. Tombola jars, collection box outside rm 6 contact Jen O'Sea or Clare Sigrist
4. Plants/succulents/pots/bowls/potting mix please contact Selina Lyon or Grace Buckley for drop off points,
5. Sausage sizzle contact Tam Bourne
6. Chocolate bar donations for the chocolate game contact Kelly Davis
7. Anything you think might go nicely in a hamper or as a raffle prize (goods/services/vouchers/cash) please contact Tam Bourne tamparkin@yahoo.com.au if you think you can help with this in any way!
8. One the actual day we will need LOTS of hands on deck. Please sign up to help. We will put rosters in the office when we finally get that date confirmed
9. If anyone has a trestle table, big esky or gazebo we could borrow on the day please contact Katie Turner trendkatie@hotmail.com

Thank you to the year group coordinators who are all doing a fantastic job organising each stall.

We really do appreciate all your ongoing support.

It's Easter Raffle Time!

Please bring your Easter treat donations to your classrooms until Friday 5th April.

Ticket sales by the school councillors before school Thursday 4th - Thursday 11th Prizes will be drawn on the last day of term. Thank you for your support!

P&C Fundraising

60th Anniversary Celebrations



Did you know that in 2019 it is 60 YEARS since **Wembley Downs Primary School** first opened its doors!?

To **CELEBRATE** this momentous occasion the WDPS P&C are hosting a Bush Dance Spectacular on **Friday 5th April 2019, 5pm-8pm**, featuring the original **Mucky Duck Bush Band**. If you grew up and went to school in WA you will know exactly who we are talking about, this Australian folk band are still going strong and they are going to put on a great show for us... talk about some nostalgia!! We would love for our entire community... parents, grandparents, teachers, staff and kids to join in the fun, wear your best Barnyard attire and there will be prizes up for grabs.

We will kick off at 5pm in the quad with some of our favourite food trucks available for you to grab a bite to eat, along with some pre show entertainment & music, then from 6pm-8pm the Mucky Duck will perform live. The School Canteen will also be open for the sale of Ice Creams, Drinks & Popcorn so please bring along money for cash purchases.

P&C News

Tickets are **NOW** available to purchase via school24, please go to <https://www.school24.net.au> and select Lunch Order / Events / Mucky Duck Bush Dance and either choose the relevant number of \$10 single sale tickets or the \$40 family pass for 5 or more family members. Book **NOW** so you don't miss out, it is only 3 weeks away!!!! Ticket sales will close on Wednesday 3rd April. If you have any issues accessing School24, please let me know and I will try to assist.

We are really looking forward to it and we hope you will join us!

Caroline Burton & Tam Bourne - Mucky Ducks Biggest Fans, Since Ca. 1990

FRIDAY 5TH APRIL

5PM - 8PM



WEMBLEY DOWNS PRIMARY SCHOOL

60TH ANNIVERSARY BUSH DANCE

Featuring the ORIGINAL Mucky Duck Bush Band

Food Trucks available from 5pm

Music, Entertainment & Prizes for Best Dressed

The Mucky Duck Bush Band live from 6pm- 8pm

For those of us who grew up and went to school in WA, this is sure to be a nostalgic event! Please come dressed in your best Barnyard attire, grab your dancing shoes and let's show our kids how to enjoy some traditional Australian folk music... don't forget to bring Granny & Grandad along too.

**Ticket sales are now available via <https://www.school24.net.au>:
\$10 pp or \$40 for a family of 5 or more**

Community News

Auskick—Wembley Downs

Hi Wembley Downs PS Parents

I hope you have all had an enjoyable summer and the school year has started well. My name is Brodie McDougall, and along with Kristie Downing, we are your Auskick Co-Ordinators at Wembley Downs.

I am looking forward to our upcoming season of Auskick at Wembley Downs, with our Auskick program being highly regarded with regards to interaction, engagement and fun from players and parents alike – we all have a part to play.



<https://play.afl/auskick/parents>

If you are interested to register, or have any of your children's friends that are considering, please encourage them to do so as I will be finalising team numbers over the next fortnight. If they are unsure and have any questions, I'm also happy to speak with anyone who is interested to discuss, my number is 0404068194.

<https://membership.sportstg.com/regofrm.cgi?formID=75003&nfEntityTypeID=5&nfEntityID=2155&aID=2155&fbclid=IwAR1US4TIG2-x9jsKGzqBy42AzWjXQk9qa7fUukA0fbp4UPRcyKm2KYGT6TU>

Our season commences on Saturday 27th of April (last Saturday of school holidays) at Luketina Reserve, Wembley Downs. We will also be hosting a parents night on Tuesday 9th of April at 5:30pm at Luketina to gain an update on 2019 Auskick program

Brodie McDougall—Auskick Coordinator Wembley Downs Auskick

0404068194



Churchlands Senior High School

Academic Extension Program: Year 7 in 2020

Testing date: Saturday 4 May 2019

Applications close: Thursday 4 April 2019

Further information:

T: 9441 1700

W: churchlands.wa.edu.au

Community News

Autumn School Holiday Workshops with LEGO® Bricks & Coding with Robotics

FUN for the Kids 🤪 More TIME for You



★ Currambine ★ Hillarys ★ Karrinyup ★ West Leederville ★ Claremont
★ Aveley ★ Bayswater ★ South Perth ★ East Victoria Park ★ Southern River

Be Quick! Enrol today and select **SCHOOL HOLIDAY WORKSHOPS** at:

www.Bricks4Kidz.com.au/Perth-Karrinyup/

☎ 0415 829 511 ✉ Rachel.Koo@Bricks4Kidz.com



The 2019 Scribblers Family Program is out now. This year's program is jam packed with FREE activities for the whole family that celebrate the wonder of writing and words. Join us on 11 & 12 May at The Goods Shed in Claremont for hands on activities and workshops, a special Mother's Day market, and inspiring sessions by world renowned writers and illustrators.

<https://www.scribblersfestival.com.au>

For more information and program.

Community News



Save!
EARLY BIRD
DISCOUNTS
AVAILABLE

CALMING TODAY'S ANXIOUS KIDS

UNDERSTANDING & SUPPORTING CHILDREN WITH ANXIETY
A ONE-DAY CONFERENCE FOR ANYONE WHO LIVES OR WORKS WITH
CHILDREN BIRTH-12

REGISTER NOW

Click here to register; <https://www.maggiedent.com/calminganxiouskids/>

This event will be held at The *Esplanade Hotel Fremantle* by Rydges.

Doors will open at 8am. The event will kick off at 8.45am sharp and conclude at 3.15pm. We ask all attendees to please be seated by 8.45am.

The conference is general allocation seating so you may sit wherever you like.

We encourage you to bring your own sealed water bottle. Morning tea and lunch will be provided.



**NICK CORRIGAN
SOCCER**

SOCCER SCHOOLS HOLIDAY CLINICS PRENDIVILLE CATHOLIC COLLEGE

Constellation Drive, Ocean Reef

**FULL DAYS 8am to 3pm \$40
HALF DAYS
morning or afternoon \$20**

Monday 15th April - Friday 26th April

**Please remember to bring water and packed lunch!
Hats and Sunblock must be worn at all times
Book online or contact Nick on the details below**

**Email: nick1965@bigpond.com Mob: 0409 118 228 Office: 9304 8111
Website: www.ncsoccerschools.com.au**